

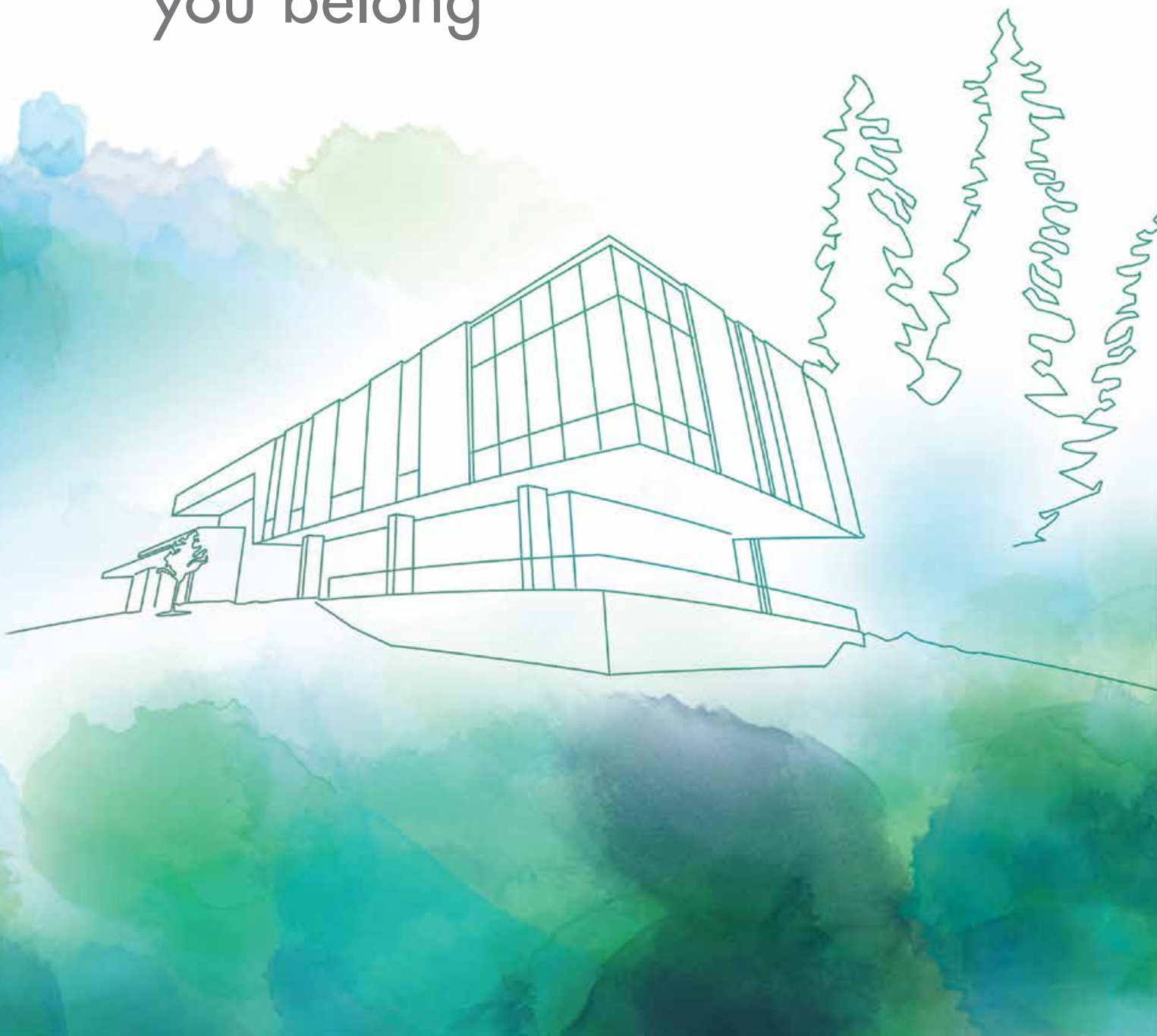
NIPISSING

U N I V E R S I T Y

ADMISSIONS 2022

nipissingu.ca/futurestudents

Right where
you belong



Focus on Success

Small school. Big opportunities.

At Nipissing University, we believe our small size is one of your biggest advantages.

Our focus on student success is consistently recognized with top rankings in Canada in the areas of student support, student experience, faculty, and residences.

Our personalized and innovative approaches to teaching create a high-quality learning environment where you can engage in lively debate and discussion with your peers and faculty.

Interested in research? We offer students a unique opportunity to assist with faculty research as an undergraduate student,

giving you a leg up on graduate school while contributing to knowledge that is shaping our world.

Did we mention you'd be living and learning amongst one of the most beautiful landscapes in the country? But don't take our word for it – come visit us to see for yourself.

As you read more about us in the following pages, we are confident that you will soon discover why Nipissing is right where you belong.

#1 in

RESIDENCE LIVING

in primarily undergraduate universities in Canada
– Maclean's 2021



#1 in

STUDENT SERVICES

in primarily undergraduate universities in Canada
– Maclean's 2021



TOP 3

MENTAL HEALTH SERVICES

in primarily undergraduate universities in Canada
– Maclean's 2021

The NU Promise

Success Starts with You

The NU Promise is a multi-year program designed to enrich your student experience at Nipissing University by helping you navigate life as a Laker and your university journey. The NU Promise Program allows you to work alongside a Student Success Coordinator to help you navigate three core pillars: Academic Success, Engagement and Self-Development, and Career Development.



If you have not secured career-related employment within 6 months of completing your four-year undergraduate degree, Nipissing invites you to return for another year, tuition-free for up to 30 additional credits.

For details visit: nipissingu.ca/nupromise

Over
96%
of Nipissing students
find employment within
6 months of graduating

TOP 3
in **STUDENT SATISFACTION**
in primarily undergraduate
universities in Canada
– Maclean’s 2021



Nipissing has over
40,000 alumni
worldwide. Connect with fellow
students and alumni through the
NU Café networking platform.
Learn more at
nipissingu.ca/nucafe

About North Bay	2	Scholarships	18	Indigenous Education	
Campus Community	4	Financial Planning	20	Degree/Diploma Programs	28
Student Union	4	Areas of Study	22	Admission, Important Dates	30
Athletics	6	Other Pathways to a Degree	24	How to Apply Full-time	32
Student Support	8	Hands-On Learning	25	Out of Province Admission Requirements	33
Residence	12	Schulich School of Education	26	Admissions Chart	34
Campus Map	16			Concurrent Education	36

City with a View



The University is situated on the traditional territory of Nipissing First Nation, and within the Robinson-Huron Treaty of 1850. We also acknowledge the nearby Anishnabek communities of Dokis First Nation and Temagami First Nation.

The City of North Bay, Ontario, is nestled between Lake Nipissing and Trout Lake and is surrounded by numerous protected natural areas, heritage forest parks and historical sites. Approximately a 3½ hour drive from Toronto or a 4 hour drive from Ottawa, our friendly and inviting city is a popular year-round destination. Offering plenty of activities, amenities and services to meet your student needs, North Bay's vibrancy is only exceeded by its hospitality.

North Bay Recreation

In addition to the activities available to you on campus, North Bay offers so much more:

- YMCA with pool
- Arenas (Memorial Gardens hosts our local OHL team, the Battalion)
- Shopping malls, local businesses
- Restaurants and bars
- Downhill ski and snowboarding hills (one in town, and a second within a 45 minute drive)
- Nordic ski clubs
- Biking paths and walking trails
- Golf courses and tennis courts
- Public beaches ideal for swimming and canoeing
- Capitol Centre (features theatre performances and concerts)
- Art galleries
- North Bay Museum
- Community festivals and events
- Transportation via city bus, taxi or online ride service

North Bay has a
**VIBRANT ARTS
COMMUNITY.**

Check out a sampling of the
local arts scene at

[creativeindustriesnorth.ca/
media](http://creativeindustriesnorth.ca/media)

Getting around
town is easy with
your full-time
student card
which doubles as a
city bus pass



North Bay at a glance:
cityofnorthbay.ca

51,553

population of North Bay
(2016)



Campus sits on

720
acres

of Canadian Shield
forest

ski hill and terrain park within city limits



*Hike to Duchesnay Falls,
or in winter you can
snowshoe or ski the trails,
right on campus.*



*North Bay is host to many different
festivals and events throughout the
year, including Pride.*

17.5 km

of paved multi-use trails
throughout the city



Your Campus Community

87%

of Nipissing students
come from outside of
North Bay

Nipissing offers you a friendly campus and a commitment to providing one of the best undergraduate experiences among universities in Canada. Enjoy a personalized approach to education with supportive professors and small class sizes. Take advantage of the many opportunities to get involved and explore your interests. Nipissing allows you to decide what shape your life will take and gives you access to all the academic, financial and personal support systems you need.

Student Union (NUSU)

info@nusu.com

(705) 474-3450 ext. 4801

nusu.com

[f](#) [i](#) [t](#) @NUSUtalks

NIPISSING UNIVERSITY STUDENT UNION

NUSU

Being away from home or starting a new chapter of your life can be overwhelming. At the Nipissing University Student Union, we are dedicated to ensuring you are supported through academic excellence and social growth. NUSU is run by four elected student Executives who work with staff to represent approximately 5000 on-campus and long-distance students. Being involved on and off campus is one of the best ways to make the most of your university experience.

As an elected board, NUSU Executives and Directors provide a full range of services (financial and academic), activities, events and political advocacy to improve the student experience including:

- NUSU Student Centre
- Health and dental plan
- Student food bank
- Clubs and societies
- Community involvement
- Orientation Week and Shine Day
- Volunteer opportunities
- Academic and government advocacy

To find out
how you can
get involved,
visit nusu.com





The NUSU Student Centre

Situated at the corner of College Drive and Monastery Road, the Student Union Building is a defining feature on the approach to campus, welcoming students and visitors while symbolizing the importance of the student body at Nipissing University.

This building features study nooks, a two-storey atrium, restaurant, nightclub, courtyard, outdoor patio, and study rooms. The Student Centre is used for social and academic purposes. This 32,000 square-foot structure will be a great place to study, connect, make memories, and attend concerts and seminars. We look forward to seeing you there!



Robert J. Surtees Student Athletics Centre

Whether you are a varsity athlete, gym enthusiast or weekend warrior, our state-of-the-art athletics centre offers everything you need to stay active. The building is located in the heart of campus next to our new artificial turf field, making it easy to cheer on our Lakers athletes. Did we mention access to this facility is included in your student fees?

- 3 gymnasiums
- 2 international squash courts
- 3 fitness rooms with weekly fitness classes in a variety of disciplines
- Cardio studio
- Weight room
- Turf field
- 20 km of hiking and snowshoe trails
- Groomed Nordic ski trails



Fun Fact:
RINGETTE
was invented in
North Bay
by Sam Jacks
in 1963

For more details or to get in touch with a coach for athletic recruitment, visit

nipissingu.ca/lakersrecruitment

Sports Teams

For a complete list of sports and details on how to register, visit nulakers.ca

Intramural Sports

Exercise and healthy competition always help to clear the mind. Nipissing's Athletics Department offers a wide range of intramural activities to keep you on your game. Teams include:

- Basketball
- Dodgeball
- Flag Football
- Hockey
- Slo-Pitch
- Soccer
- Volleyball
- Ultimate Frisbee

Club Sports

Club sports are available to all Nipissing students and are both recreational and competitive.

- Cheerleading
- Women's Ringette
- Dance Pak

Varsity-Club Sports

- Men's Lacrosse

Varsity Teams

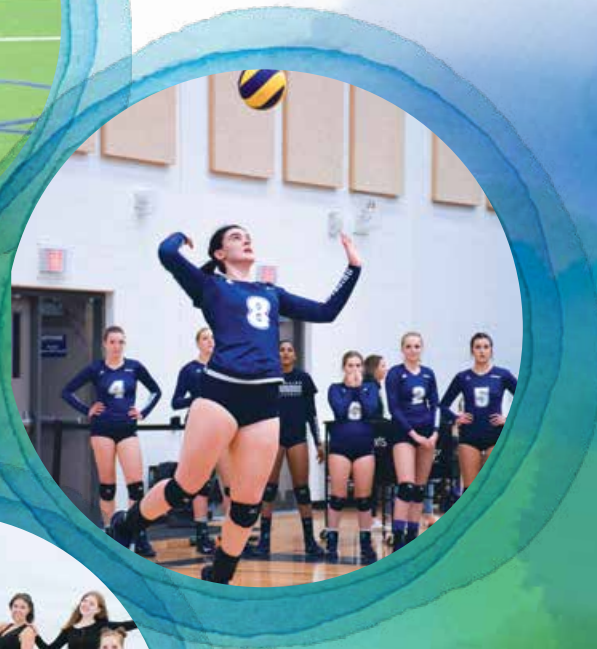
Go Lakers! Our varsity athletes always bring their A-game. Get your friends together and come out to cheer on your favourite teams.

We have both men's and women's varsity teams competing at the OUA level in:

- Basketball
- Cross-country Running
- Hockey
- Nordic Skiing
- Rowing
- Soccer
- Volleyball



Thanks to the generous contributions of our donors, the multi-use turf field meets FIFA standards and is located adjacent to the R.J. Surtees Student Athletics Centre.



Home of the
LAKERS



Student Support



You can count on our support – academically, culturally, financially and personally. Student Development and Services is an excellent resource that will help you maximize your success.

Academic Advising

nipissingu.ca/academicadvising

Our primary focus is to enhance your learning experience and development. We will help you:

- Plan your programs and advise you on any academic matters
- Choose courses and clarify academic procedures or regulations
- Make informed decisions regarding your academic priorities and goals



Accessibility Services

sas@nipissingu.ca • nipissingu.ca/sas

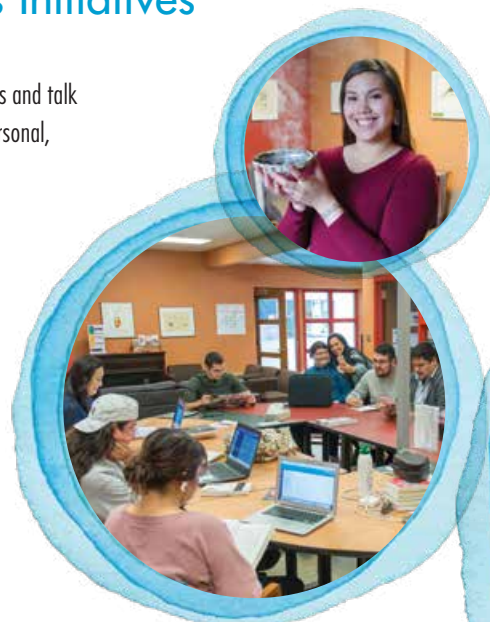
Student Accessibility Services assists students with permanent or temporary disabilities. If you have (or suspect that you have) a disability, we encourage you to contact us to ask about test and exam accommodation, distraction-reduced working and testing areas, note-taking support, adaptive technology and assistive software, alternate format reading materials, and counselling or tutorial support.

Enji giigdoyang, the Office of Indigenous Initiatives

indigenousprograms@nipissingu.ca • nipissingu.ca/indigenous

In the Nbsiing dialect of Anishnaabemwin, Enji giigdoyang means “where we come to meet, discuss and talk about things.” We enhance the educational experience through a holistic approach to academic, personal, and cultural support and offer a range of programs. We honour one another’s life experiences and invite you to connect with our campus community and guests to the university in events throughout the year. We offer:

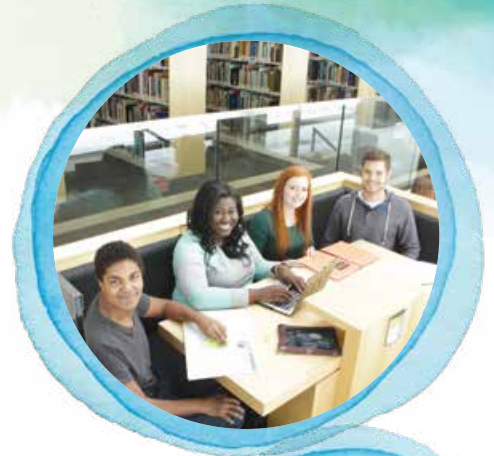
- Enji giigdoyang Student Lounge
- Indigenous Week and Enji giigdoyang Speaker Series
- Visiting Elders
- Experiential learning opportunities
- Academic, personal and cultural supports
- Indigenous mentorship programs



Equity Centre

equitycentrenu@nipissingu.ca • (705) 474-3450 ext. 4213

The Equity Centre is a student-run inclusive space on campus where students can hang out, learn, or help organize events and campaigns that raise awareness of equity issues that impact the diverse communities at Nipissing University. The Centre provides education and resources, advocates on behalf of students and promotes allyship on campus. The Equity Centre and its events are open to everyone.



Harris Learning Library

eclibrary.ca/library • info@eclibrary.ca • 705.474.3450 ext. 4221

The Harris Learning Library is your gateway to library services, online instructional tutorials and information resources including electronic and print books, articles and streaming videos. Information resources can be accessed through OMNI (nipissingu.ca/omni), an easy to use academic search tool that provides access to over 23 million items from 18 of Ontario's university libraries. Friendly and knowledgeable staff members provide help in person, by email or phone whether you are on campus, studying online, or from a distance. For those studying at a distance, further information is available here: nipissingu.ca/remotelibraryservices



Health Centre

nipissingu.ca/healthcentre • (705) 474-7600 ext. 5261

A medical team is situated at the Campus Health Centre and is available to all students Monday to Friday. The Campus Health Centre provides quality services and health care delivery by a licensed physician and nurses.



Everyone is welcome to attend and participate in the annual Powwow in September. Celebrate and share Indigenous culture and the diversity of our community.



International Initiatives

myinternational@nipissingu.ca • nipissingu.ca/international

Study abroad or internationalize your degree at home. We offer support services and programs to assist with intercultural development and integration, creating experiences that foster global citizenship. Upper year students enjoy our exchange partnerships with Australia, Barbados, China, Finland, France, Germany, India, Ireland, Japan, Netherlands, Norway, South Africa, South Korea, Sweden and the United Kingdom.

You can also volunteer with the International Student Mentorship Program to help international students adjust to living and learning in Canada.



Study abroad at one of our partner schools around the world



Multi-Faith Space

Room H340

With a diverse community studying and working at Nipissing, the University has developed the Multi-Faith Space, offering an inclusive space on campus for people to practice all religions. The neutral environment allows for a comfortable place for prayer, meditation and reflection.





Sexual Violence Prevention and Education

svsupport@nipissingu.ca • nipissingu.ca/sexualviolence

Nipissing University is committed to creating and maintaining a safe environment for all students. Survivors are offered: navigation of services on and off campus, assistance with arranging academic accommodations and help understanding reporting options. Additionally, there are free workshops on consent, healthy relationships and bystander intervention for all students.

Student Counselling

counselling@nipissingu.ca • nipissingu.ca/counselling

Student Counselling Services offers free personal counselling services, specialized therapeutic groups, referral services and wellness events to all students. We endeavor to do all we can to help support students in achieving positive mental and emotional wellness.

Student Intervention Support

sis@nipissingu.ca • nipissingu.ca/sis

Student Intervention Support (SIS) is offered to students who may be experiencing difficulty accessing the appropriate services, require a referral to services, require further collaboration within their current support services, or need assistance transitioning to or from the University (e.g. returning after being admitted to the hospital, registering again after withdrawing for mental health reasons, etc.) The relationship between the SIS staff and the student is collaborative, goal-oriented, supportive and voluntary.

Student Learning and Transitions

slt@nipissingu.ca • nipissingu.ca/slt

The goal of Student Learning and Transitions (SLT) is to support students' academic and personal success from Orientation to graduation. We provide one-on-one academic consultations, group workshops and tutorials, peer-to-peer support and tutoring, subject-specific resources and a referral point for all students. Our transition programs focus on the multiple changes that occur throughout a student's post-secondary experience and include facilitated programs, campus activities, and events that promote academic and social integration to your Nipissing University Lakers community.

Apply for Residence



A private bedroom of your own

Our top-rated residences will make you feel right at home. You can count on making fast friends within your residence community, and enjoy the luxury of a private room of your own!

Our student leaders, Residence Dons and award-winning residence staff give tutorials on everything from the basics of laundry and cooking to making connections within the community. Our Community Assistants and Academic Dons offer additional support for residents in each complex to help with a smooth transition into university.

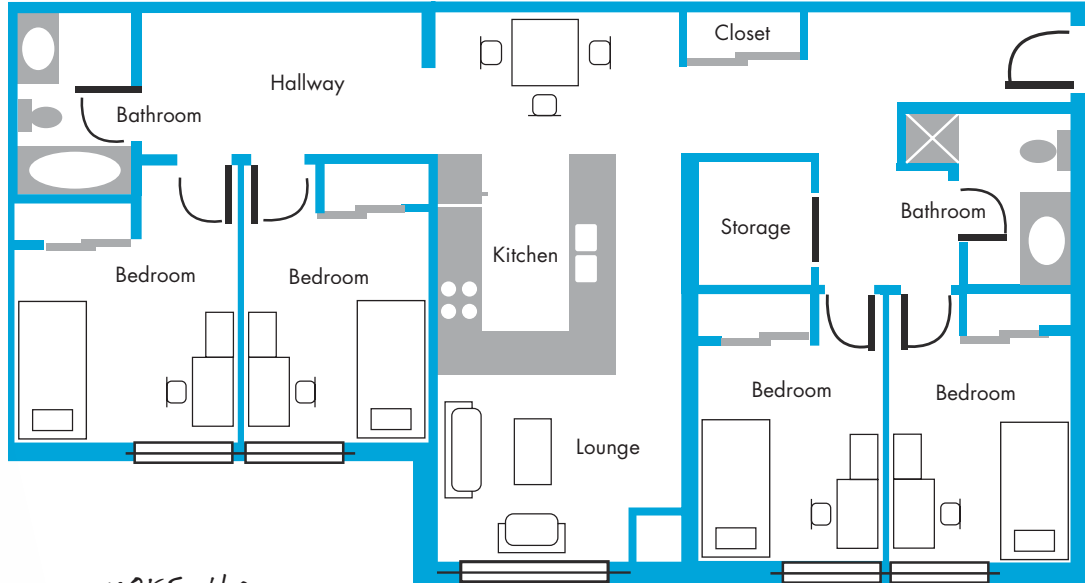
For full details, visit nipissingu.ca/residence



Residences are all a short walk to class, or a quick bus ride. See page 17 for a campus map.

Suite-style Residences

sample layout



Governors House



Chancellors House



Founders House

Guaranteed Single Rooms in Residence

If you are a current secondary school student who receives full-time admission by **May 27, 2022**, and you meet the residence application and deposit deadline of **June 1, 2022**, you are guaranteed a single room in a suite-style residence. Each fully-furnished suite accommodates four students and features:

- 4 private bedrooms
- Furnished kitchen with fridge and stove; living room; dining area
- 2 full bathrooms
- Local telephone and cable TV hookup in bedrooms and living room
- Wireless and wired high-speed internet access
- Access to a laundry room, common areas and lounge

Living Learning Communities

Live with friends who like the same things you do in one of our four Living Learning Communities (LLC). The communities bring together students who share similar interests, and provide an immediate support network.

- Balance: physical, mental and spiritual well-being
- Connect: global citizenship and cultural education
- LEAD (Leaders Emerging through Active Development): leadership
- Mosaic: arts-based, including music, drama, crafts, fine arts, digital and more.



therapy dog visits reduce stress



Townhouse Residence Complex (TRC)

These residences are usually reserved for upper year students. The TRC is located beside the main academic building at the top of College Drive and accommodates six students to a house. Built on two levels, each fully-furnished townhouse has:

- Three private bedrooms and half bathroom on the main floor
- Three private bedrooms and a full bathroom on the upper level
- Kitchen with fridge and stove
- Dining area
- Living room and loft

Off Campus Living

offcampusliving@nipissingu.ca
ocl.nipissingu.ca

Off Campus Living (OCL) supports Nipissing University students who are considering living or currently living off campus through educational content, digital resources, workshops, and support connecting with local rentals.

When the weather gets cold enough, the residence skating rink is flooded for students to skate for fun or play a friendly game of hockey!

Townhouse Residences



Residence events and activities help you form lifelong friendships and socialize all year long

Campus Map

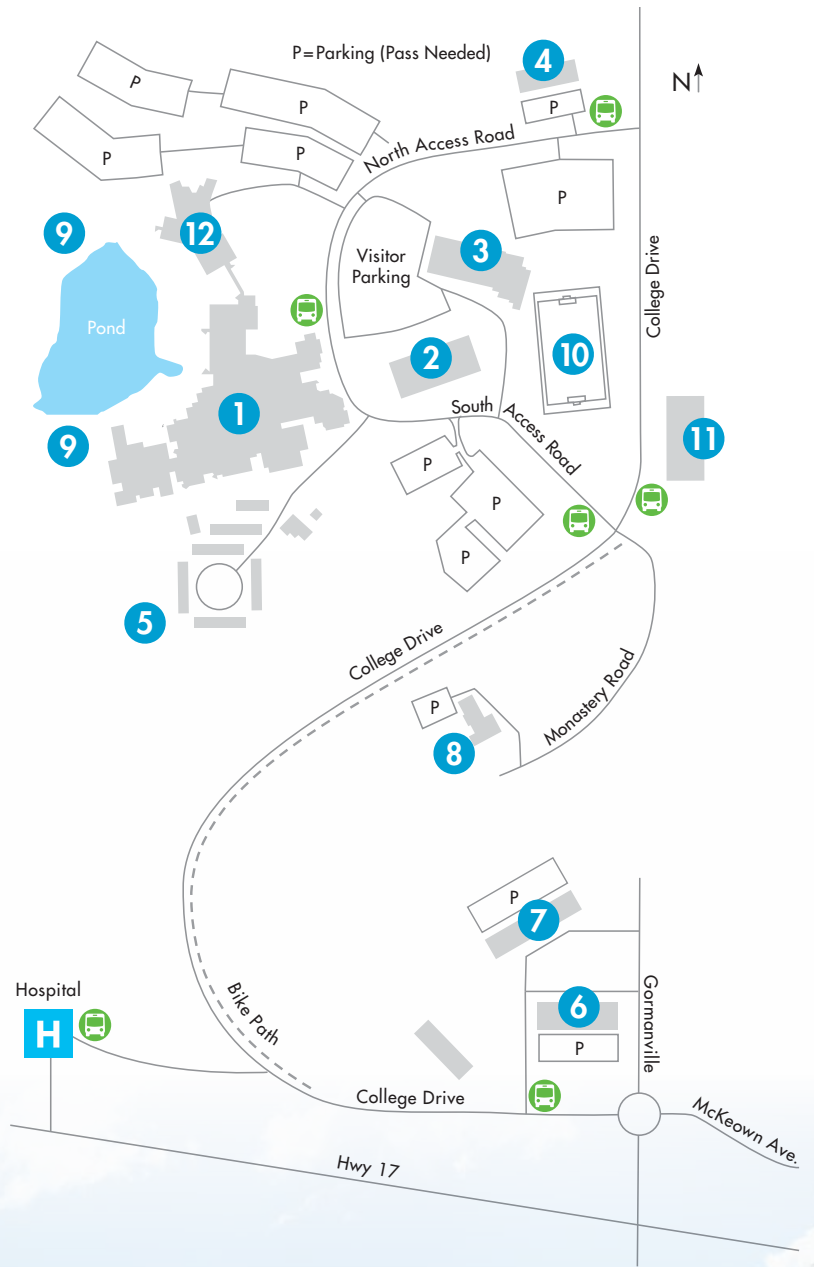
Check out our
interactive map
with virtual tours
and photos:
map.nipissingu.ca

We are proud to
share our campus with
Canadore College,
which adds to the
vibrancy of our
campus community

20 km
of hiking/Nordic ski
trails on campus



- 1 Nipissing Main Building
- 2 Harris Learning Library
- 3 R.J. Surtees Student Athletics Centre
- 4 Governors Residence
- 5 Townhouse Residence Complex (TRC)
- 6 Founders Residence
- 7 Chancellors Residence
- 8 Monastery Hall (Fine Arts)
- 9 Paths to 20 km of trails
- 10 Turf Field
- 11 NUSU Student Centre
- 12 Canadore College
-  City Bus Stop



Finance Your Education



If you get the marks, you get the money!

Your final grades make a big difference. Scholarship averages are calculated using your best six final 4U/4M marks (or final IB score including bonus points) completed as of June 30, 2022. All Canadian and international applicants applying directly from secondary school for September entry will be considered automatically for guaranteed entrance scholarships – no application needed!

The chart below outlines the 2022-2023 guaranteed entrance scholarships. Please visit nipissingu.ca/highschoolawards for the most up-to-date entrance awards information or email finaid@nipissingu.ca

No application needed!

Guaranteed Entrance Scholarships

Scholarship Average [†]	Year 1	Year 2*	Year 3*	Year 4*	Total Scholarship Value
95% + (39+ for IB)	FREE TUITION	FREE TUITION	FREE TUITION	FREE TUITION	>\$24,000
90-94% (36-38 for IB)	\$2,500	\$2,500	\$2,500	\$2,500	\$10,000
85-89% (33-35 for IB)	\$1,500	\$1,500	\$1,500	\$1,500	\$6,000
80-84% (30-32 for IB)	\$1,000	\$1,000	\$1,000	\$1,000	\$4,000

Notes:

- Free tuition is based on domestic tuition rate.
- Students are only eligible for the first four years of undergraduate study.
- Students in their professional years of study are not eligible for the renewal of these scholarships.

[†] Average based on the best six final 4U/4M courses (provincial or international equivalent) or final IB score (including bonus points).

* Based on cumulative GPA (CGPA) as recorded on April 30th. Students must enroll in no less than 24 credits annually to retain scholarship eligibility.

Apply with just
one application
by **May 1**

Awards and Bursaries

Apply for all high school entrance awards and bursaries with just one application, **even before you've received your Offer of Admission**. Complete and submit the application form by May 1 at nipissingu.ca/entranceawards

There are a number of awards and bursaries based on unique criteria:

- Financial need
- Demonstrated citizenship
- Volunteerism
- Your program of interest
- Home town

\$10,000 Chancellor's Awards

- Awarded to two first-year students
- Entering full-time undergraduate studies (first entry only)
- Minimum average of 85%, evidence of personal leadership activities and financial need
- Renewable at \$3,000 per year

\$7,000 Schulich Scholarships

- Awarded to selected full-time students entering the first year of an undergraduate degree program with a focus on education
- Concurrent Education, Bachelor of Physical and Health Education, or the Consecutive Bachelor of Education*
- Must have a minimum 80% average and at least one of the following: volunteer work; community involvement; or financial need.

*Please note: Students applying to the 2 year Consecutive Bachelor of Education program should apply for Schulich Scholarships by Jan 15.

\$500 – \$2,500 Entrance Bursaries and Awards

- Need-based awards and bursaries
- Entering undergraduate studies directly from secondary school

Other Financial Sources

- Apply for Government Grants and Loans (OSAP): ontario.ca/OSAP
- Apply to NUWork On-campus Work Study Program: nipissingu.ca/nuwork

For a complete list of scholarships, awards, bursaries, and other funding options, visit nipissingu.ca/bursaries



To qualify for an NUWork position, you need to demonstrate financial need, so apply for funding sources like OSAP (even if you don't receive or accept it.)



Visit our online calculator for tuition and living expenses:
nipissingu.ca/tuition

Create a Financial Plan

A plan helps you achieve your goals on time and on budget. This information is provided for guidance only. These are estimated based on 2021-2022 costs of living on campus for the 8-month academic term and are subject to change from year to year. Please visit nipissingu.ca/feesandpayments for the most current information.

Studying in North Bay		International Student Fees
Tuition	\$5,780 – \$7,275	\$19,325
Ancillary Fees (includes a City of North Bay transit pass)	\$1,531	\$2,011 ^Δ
Residence Accommodation	\$5,717 – \$6,425 [†]	\$5,717 – \$6,425 [†]
Food	\$2,600*	\$2,600*
Books and Supplies	\$500 – \$1,000	\$500 – \$1,000
Personal (does not include travel home)	\$1,700	\$1,700
Total	\$17,828 – \$20,531	\$31,853 – \$33,061

* Meal plan included in above cost for example purposes is \$1100/term, plus an estimated \$400 for weekend eating out or groceries.

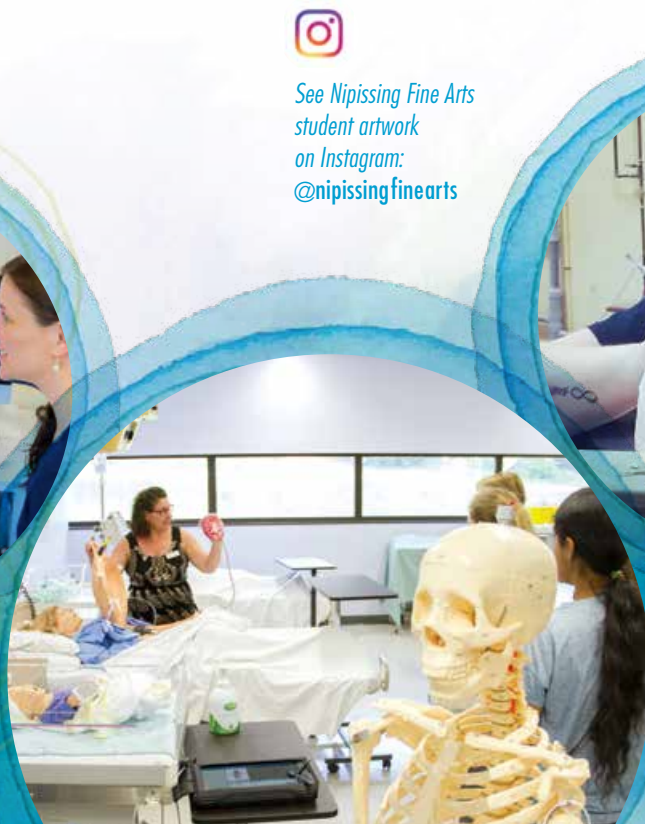
† Does not include refundable \$100 damage deposit.

• Optional on-campus parking (depending on lot): \$161 – \$255

Δ Includes UHIP (University Health Insurance Plan) for International Students (\$60/month x 8 months = \$480.00); subject to change



See Nipissing Fine Arts student artwork on Instagram: [@nipissingfinearts](https://www.instagram.com/nipissingfinearts)



Optional Meal Plans

As a student, you have a lot on your plate and your food service team wants to help. When you purchase an optional meal plan, they'll take care of the menu planning, grocery shopping, cooking and cleanup – all you have to do is show up with an appetite!

Annual Plan	\$2200	Valid until the end of the school year	Tax-free purchases (save 13%) + 5% discount
Semester Plan	\$1100	Valid until the end of the school year	Tax-free purchases (save 13%) + 5% discount
Swipe & Save Reloadable	Minimum \$100	No expiration	5% discount

Optional meal plans are available to all students. For full details visit dineoncampus.ca/nipissingcanadore



Areas of Study

We offer a variety of options to structure and customize your degree. For admissions requirements and degree designations (eg. BA vs BSc) please see the charts at the end of this book starting on page 34. For a full list of program offerings, please visit nipissingu.ca/programs

Average
Class Size
29



Faculty of Arts and Science

- Anthropology
- Biology
- Child and Family Studies
- Classical Studies
- Computer Science
- Data Science
- Economics
- English Studies
- Environment and Physical Geography*
- Environmental Biology and Technology*
- Environmental Geography*
- Fine Arts*
- Gender Equality and Social Justice
- Geography
- History
- Indigenous Studies
- Liberal Arts – Foundations Pathway*†
- Liberal Science – Foundations Pathway*†
- Mathematics
- Philosophy

- Political Science
- Psychology
- Religions and Cultures
- Social Welfare and Social Development
- Sociology

Faculty of Education and Professional Studies

- Business
 - Concentrations in: Accounting, Entrepreneurship and Innovation Leadership, Finance, Human Resources, International Business, and Marketing
- Commerce (only as a Dual Degree with BA or BSc)
- Criminal Justice
 - Streams in: Corrections, Criminal Justice Studies, Criminology, and Policing
- Education
- Nursing
- Physical and Health Education
- Social Work

Motion capture equipment at the Centre for Physical and Health Education facility.

* Not available as a minor

† The Foundations Pathway supports the transition from high school to university for those students who have faced challenges in an academic environment. Further information can be found at nipissingu.ca/foundationspathway



Dual Degrees

Bachelor of Commerce Dual Degree

If you would like to combine Business with an Arts or Science program, Nipissing offers you the opportunity to study both and complete a Bachelor of Arts or Bachelor of Science degree with a Bachelor of Commerce degree in as little as five years. This dual degree allows you to study a wider range of general interest and career specific subjects. For admissions requirements, please see page 35. For more information on getting a dual degree, please contact the Recruitment Office at nvinfo@nipissingu.ca or call (705) 474-3450 ext. 4200.

Bachelor of Education (Concurrent)

Nipissing offers a 6-year concurrent program that leads to you earning both an honours undergraduate degree in your discipline of choice (except Nursing and Social Work), and a Bachelor of Education degree. For further details, see page 26 or visit nipissingu.ca/concurrent

No specific degree or major is required for Law, Medical, MBA, or Veterinary schools

Nipissing University offers all prerequisite courses required for admission to these programs



Minors

In addition to your main degree program, you may choose to study additional subjects. The following minors are offered at Nipissing, subject to availability. (Minors are also available in the Faculty of Arts and Science areas of study on the previous page, with a few exceptions.)

- Art History and Visual Studies
- Accounting
- Business Administration
- Human Resources
- Chemistry
- Corporate Social Responsibility
- Entrepreneurship
- Environmental Science
- Film
- Finance
- French
- Human Rights
- International Business
- Legal Studies
- Marketing
- Media, Culture, and Communications
- Media, Representation and Social Justice
- Physics
- Spanish
- Studio Arts
- Study of State Violence (War, Atrocity, and Genocide)

Certificates

Certificates must be completed with a degree program. Please see the Admissions Chart on pages 34-37 for a list of certificates eligible with your program.

- Applied Behaviour Analysis (ABA) – Lifespan
- Archaeological Monitoring
- Bilingualism
- Digital Classics
- Digital Humanities
- Early Intensive Behaviour Intervention (EIBI) – Autism Spectrum Disorders (ASD)
- Environmental Management
- Forest Resource Management and Conservation
- Game Design and Development
- Geomatics
- Health Studies and Gerontology
- iLEAD Business Experience
- Neuroscience
- Conflict Resolution and Negotiation
- Program Evaluation and Applied Research (PEAR)
- Study of State Violence (War, Atrocity, and Genocide)

Confused about the difference between a major, minor, honours specialization or specialization? Visit nipissingu.ca/programs to learn more.

Other Pathways to a Degree

College Transfer

Are you planning to attend college before university? Nipissing has a number of agreements and pathways in place to help you apply the credits you will earn in college towards a university degree. For more information, visit nipissingu.ca/collegetransfer

Indigenous Foundations Program

indigenousprograms@nipissingu.ca • nipissingu.ca/indigenous

This full-time, first year transition-to-university program is designed for Indigenous students who are planning to pursue an undergraduate degree and want access to cultural, personal, and/or academic resources.

Students who are transitioning from high school, upgrading, entering from a college program, or who have simply taken a break from their studies are eligible to apply to the program.

Students are part of a community of peers, staff, faculty and Elders while obtaining 24 credits toward a university degree in pre-selected courses for IFP students, and will:

- learn alongside other Indigenous students;
- attend orientation week to meet the professors and other students in the program;
- become more familiar with the university system; and
- gain confidence to be successful at university.

To apply to the Indigenous Foundations Program, prospective students can find the printable application form at nipissingu.ca/indigenous

For more information, please contact the Student Success and Development Coordinator at indigenousprograms@nipissingu.ca



Hands-On Learning

Experiential learning provides students with hands-on learning experiences and results in uniquely employable graduates who are not only ready for the workforce, but ready to lead.

Experiential Learning for Arts and Science (ELAS)

ELAS is an exclusive project between Student Development and Services, the North Bay & District Chamber of Commerce and the Faculty of Arts and Science that focuses on providing students with hands-on learning experiences. With a strong emphasis on learning competencies, ELAS offers students enriched learning opportunities that focus on the development of professional skills resulting in confident, successful and highly employable graduates ready for the workforce.

Co-ops, Placements, and Internships

Experiential learning opportunities in many cases are built right into the curriculum as placements and directly engage students in a wide variety of practical, hands-on experiences outside the classroom. Multiple programs offer volunteer learn-by-doing opportunities that develop competencies in communication, critical thinking, collaboration, problem solving and leadership through integrated course-work placements, professional internships, co-ops and practicums.

Biidaaban Community Service-Learning (BCSL)

Biidaaban Community Service-Learning (BCSL) is a unique experiential learning program that allows students to volunteer within community organizations. Students may support not-for-profit organizations for course credit through project-based learning or through placements. They can also support Indigenous children and youth through the Biidaaban Youth Group and Biidaaban Academic Support programs. Participants receive training from Elders, Indigenous knowledge holders, faculty, educators and community members prior to their placements. Biidaaban is an Anishnaabe word meaning “the point at which the light touches the earth at the break of dawn.”

iLEAD Business Experience Certificate & Expeditions

The successful completion of the iLEAD Business Experience Certificate is verification that students have taken advantage of the opportunity to learn through experience, action and discovery. The certificate is earned through successful completion of 15 specific Business credits. As students earn credits toward their degree, courses offer practical, hands-on experience through directed study, workplace internships, overseas study and volunteer service to others.



Nipissing offers
**UNDERGRADUATE
RESEARCH
OPPORTUNITIES**

Nipissing's annual Undergraduate Research Conference celebrates the contributions of undergraduate research across Ontario. This conference allows students to showcase their work in a professional setting before their peers, faculty and the public. Learn more at nipissingu.ca/ugrc

TOP 10

**EXPERIENTIAL
LEARNING**

in primarily undergraduate universities in Canada
– Maclean's 2021



The Schulich School of Education

For more details, visit
nipissingu.ca/schulich

The Schulich School of Education at Nipissing University is a recognized leader in the field of teacher education. Earn your Bachelor of Education (BEd) degree in one of the pre-eminent education programs in Ontario. Renowned for graduating exceedingly well-prepared and professionally-minded teachers, the Schulich School will prepare you for teaching in traditional and non-traditional environments, and provide you with transferable communication and collaborative skills that are essential to any career.

With a history of over 100 years of teacher education, combined with a rigorous offering of professional learning opportunities, the Schulich School of Education immerses teacher candidates in a series of experiential learning opportunities that range from the integration of digital technology in the classroom, to national and international experiences, to polishing résumés and interview techniques prior to the annual education career fair. Schulich School of Education graduates maintain a distinct reputation as leading-edge and professional educators.

Earn your teaching certification through the Concurrent or the Consecutive BEd degree programs, or see page 28-29 for Degree/Diploma Programs in Indigenous Education.

For a list of **teaching subjects**, visit:
nipissingu.ca/teachingsubjects



Pursuing a Degree in Education

	Concurrent Bachelor of Education	Consecutive Bachelor of Education
Description	Students graduate with a Dual Degree – an honours undergraduate degree in their discipline of choice (except Nursing and Social Work) and a Bachelor of Education degree.	A program for those students who already have a completed 3 or 4 year undergraduate degree from Nipissing or another university.
Duration	6 years	2 years (following an undergraduate degree)
Practicum	19 weeks of practicum + 60 hours of Community Leadership Experience (CLE) English Public school boards, English Separate school boards, and First Nations or federally administered schools	19 weeks of practicum + 60 hours of Community Leadership Experience (CLE) English Public school boards, English Separate school boards, and First Nations or federally administered schools
Division	Choose one of the following: P/J – (J/K to Grade 6) P/J – French as a Second Language J/I – (Grades 4 to 10) I/S – (Grades 7 to 12)	Choose one of the following: P/J – (J/K to Grade 6) P/J – French as a Second Language J/I – (Grades 4 to 10) I/S – (Grades 7 to 12)
How to Apply	Apply through ouac.on.ca by Jan 13, 2022	Apply through ouac.on.ca by Dec 1, 2021

P/J = Primary/Junior J/I = Junior/Intermediate I/S = Intermediate/Senior

Join the Eddie Band!

Education students with a love of music rehearse together and have the opportunity to play in a concert at the end of the school year

Love to sing?

Near North Voices is North Bay's university-community choir. Membership is open to students, faculty, staff and the community.
nearnorthvoices.com

Degree/Diploma Programs in Indigenous Education

For more information about our summer diploma programs, including admission requirements, tuition, family support, deadlines and the application process, please visit nipissingu.ca/indigenouseducation

Indigenous Teacher Education Program (ITEP) Degree/Diploma

The Indigenous Teacher Education Program (ITEP) Degree/Diploma program is available for individuals of Indigenous ancestry. You are eligible if you have successfully completed one of the following from an accredited university or college:

- An undergraduate degree
- Early Childhood Education (ECE)
- Indigenous Classroom Assistant Diploma Program (ICADP)
(formerly Aboriginal/Native Classroom Assistant Diploma Program (ACADP/NCADP))
- Native Language Teaching Certificate (NLTC)
- Native Special Education Assistant Diploma Program (NSEADP)

This summer intensive program prepares individuals to develop teaching strategies, technological skills and curriculum knowledge within an Indigenous worldview. The program's structure allows working professionals to attend classes in the summer and to return to employment during the academic year. Upon completion, successful applicants will earn a Certificate of Qualification from the Ontario College of Teachers in the Primary/Junior Divisions.

Indigenous Classroom Assistant Diploma Program (ICADP)

The Indigenous Classroom Assistant Diploma Program (ICADP) offers its candidates the opportunity to explore the role of the classroom assistant who works with Indigenous children in elementary public and First Nation schools.

Students explore culturally relevant pedagogical understandings in working with elementary students of all academic levels in numerous subject areas.

Practicum experiences allow students to connect educational theory with practical applications in the classroom and the entire school. Our graduates return to their classrooms with newly acquired skills and knowledge gained from the Indigenous Classroom Assistant Diploma Program to assist Indigenous children in elementary classrooms across the province.

Students in our Indigenous education programs are invited to bring their families with them into residence

The Youth Experience Program and NUScience Explorations camps are available to children of students in our Indigenous education programs



Teacher of Indigenous Language as a Second Language (TILSL) Degree/Diploma

The TILSL Program provides students who are fluent in the languages of Anishnaabemwin, Cree, Lunaape, Mohawk and Cayuga the opportunity to earn a Diploma in Education or Bachelor of Education Degree from Nipissing University. Indigenous Language teacher candidates will acquire a thorough understanding of culturally-based teaching strategies as well explore new technologies to deliver Indigenous traditional teachings and Indigenous languages as a subject within First Nation and Ontario public schools from Kindergarten to grade 12. The program's structure allows working professionals to attend classes in the summer and to return to employment during the academic year.



Apply for Admission

Apply
online at:
ouac.on.ca

To be considered for full-time admission to an Ontario university, prospective students can apply to the Ontario Universities' Application Centre (OUAC). If currently enrolled in an Ontario secondary school, your guidance counsellor will give you a Personal Identification Number (PIN) so that you can access the OUAC site and follow the application process. You will receive a confirmation email from Nipissing once your application has been received.

Your Application Timeline

Jan 13,
2022

Ontario deadline to
apply to university

Ontario secondary school students are expected to submit application forms to the Ontario Universities' Application Centre (OUAC) by this date. Ontario secondary school students use the OUAC 101 application form.

Jan –
May

Offers of Admission
are sent out

Offers of Admission are made during this period.

Please Note: Offers to Nursing, Physical and Health Education, and History with an Orientation to a Master of Arts in History programs are made in late April or early May.

April 1,
2022

Application deadline

Ontario secondary school students

- New applications will continue to be accepted between January 13 and April 1.
- Submit any changes to your program choices by this date.

Canadian secondary school students from outside Ontario

- Submit all applications to the Ontario Universities Application Centre (OUAC) by this date. Use the OUAC 105 application form.

Limited enrollment programs

- April 1 is the deadline for Nursing, Physical Education, and History with an Orientation to a Master of Arts in History. Late applications will not be considered after this date.

Late applications may be considered after April 1 with the exception of limited enrollment programs (BScN, BPHE and OMAH.)



**May 1,
2022**

Entrance Awards/ Scholarships Application Deadline

Apply for scholarships and bursaries before receiving your Offer of Admission. To find application forms for the Chancellors Scholarships, Schulich Scholarships or other awards and bursaries, visit nipissingu.ca/studentfinancialservices

**May 27,
2022**

Response Date

Secondary school applicants who applied by the January deadline should receive one of three responses from Nipissing by this date:

- 1) Offer of Admission to your program of choice or an Alternate Offer; or
- 2) Delay of decision notification pending your response to our letter of request for specific additional information; or
- 3) Refusal.

Secondary school students receiving a full-time Offer of Admission by this date are eligible for a guaranteed spot in residence.

**June 1,
2022**

Accept our Offer of Admission by this date

Accept our Offer of Admission on the Ontario Universities' Application Centre (OUAC) website.

Residence Application Form and Deposit deadline

Guarantee your spot in residence by submitting your residence application form and deposit.

The Offer of Admission package you received from us provides instructions on how to apply and make online payments. Requests for special accommodations in residence should be completed by this date through the Accessibility Services Office (email: sas@nipissingu.ca).

If you have admissions questions, contact admissions@nipissingu.ca or call (705) 474-3450 ext. 4600

Applying to study full-time

How to apply

	Apply through the Ontario Universities' Application Centre (OUAC)	
Ontario secondary school students	101 application process	Apply by visiting ouac.on.ca
Students attending Canadian secondary schools outside Ontario	105 application process	
Applicants not currently attending a Canadian Secondary School		

Canadian Secondary School Applicants

Applying to your program of interest at Nipissing is simple – there are no hidden formulas. A minimum average of 75% is required for admission consideration to Concurrent Education. A minimum average of 80% is required for History with an Orientation to a Master of Arts in History. A minimum average of 70% is required for consideration for admission to all other programs. Averages for all programs are based on your best six final 4U/4M or equivalent courses including all required courses. Please refer to the Admissions Chart on page 34 for specific course requirements.

For general admission requirements for all Canadian provinces and territories, see the next page. The chart also outlines each provincial/territorial high school course that Nipissing University will accept as equivalent to the specific Ontario program prerequisites.

International Baccalaureate

Applicants who have successfully completed the International Baccalaureate (IB) diploma with at least six subjects, including three at a higher level, with a minimum final grade of 24, will be considered for admission. Students who successfully complete the International Baccalaureate (IB) diploma with a score of 24 or higher are eligible to receive up to 30 transfer credits, equivalent to one year of full-time study. Eligibility will be considered for all IB courses (higher & standard level) completed with a score of 5 or higher. Students are also eligible to receive transfer credit for individual higher & standard level IB courses completed with a score of 5 or higher.

Advanced Placement

Applicants who have completed Advanced Placement (AP) courses are encouraged to submit their examination results. Official AP score reports must be sent directly to Nipissing University. Advanced standing will be granted for most AP courses completed with a grade of 4 or higher, to a maximum of 18 credits. Nipissing's College Board number is 4149.

Proof of Proficiency in English

All applicants to Nipissing University undergraduate degree and post-baccalaureate programs (excluding BEd) from countries where the dominant language of instruction is other than English will be required to submit results of an English language proficiency test and reach the required proficiency level for admission consideration. Permanent Resident applicants whose first language is not English may be required to provide proof of proficiency in English. Permanent Resident applicants whose first language is not English but who have lived at least three years in Canada, or a country where English is the dominant language may be exempt. Nipissing's full policy including minimum test scores and exemption policy can be found at nipissingu.ca/englishproficiency

Out of Province Admission Requirements

This table shows the high school courses for all provinces and territories that are equivalent to the admission requirements for Ontario students. Admission requirements for Ontario students can be found on the next page.

Ontario	General Requirements	English 4U	Biology 4U	Chemistry 4U	Physics 4U	Calculus and Vectors 4U	If Advanced Functions 4U or 4U Mathematics is required	Introduction to Kinesiology 4U
Alberta/NWT/Nunavut	Secondary School Diploma with five academic Grade 12 courses numbered 30 or 31 including program specific prerequisites.	English 30 or ELA 30-1	Biology 30	Chemistry 30	Physics 30	Math 31	Math 30-1 or Math 30-2 (Math 30-1 must be presented if Advanced Functions is specifically stated)	N/A
British Columbia/Yukon	Secondary School Diploma with four academic level Grade 12 courses (courses with % grades not letter grades) including program specific prerequisites. Provincial exams are not required.	English 12 or English 12: First Peoples	Biology 12 or Anatomy and Physiology 12	Chemistry 12	Physics 12	Calculus 12	Foundations of Math 12 or Pre-Calculus 12 (Pre-Calculus 12 must be presented if Advanced Functions is specifically stated)	N/A
Manitoba	Secondary School Diploma with five academic 40 level courses including program specific prerequisites.	English Language Arts 40S	Biology 40S	Chemistry 40S	Physics 40S	Calculus 45A or 45S	Applied Math 40S or Pre-Calculus 40S (Pre-Calculus 40S must be presented if Advanced Functions is specifically stated)	N/A
New Brunswick	Secondary School Diploma with five academic Grade 12 courses number 121 or 122 (courses numbered 120 may be considered) including program specific prerequisites.	English 121 or 122	Biology 121 or 122	Chemistry 121 or 122	Physics 121 or 122	Calculus 120	Foundations of Math 120 or Pre-Calculus A120 or B120 (Pre-Calculus A120 or B120 must be presented if Advanced Functions is specifically stated)	N/A
Newfoundland	Secondary School Diploma with six two-credit academic courses at level 3000 including program specific prerequisites.	English 3201	Biology 3201	Chemistry 3202	Physics 3204	Calculus 3208	Advanced Math 3200 or Math 3201 (Advanced Math 3200 must be presented if Advanced Functions is specifically stated)	N/A
Nova Scotia	Secondary School Diploma with five academic or advanced Grade 12 courses including program specific prerequisites.	English 12 or English 12: African Heritage	Biology 12	Chemistry 12	Physics 12	Calculus 12	Math (Academic) 12 or Pre-Calculus 12 (Pre-Calculus 12 must be presented if Advanced Functions is specifically stated)	N/A
Prince Edward Island	Secondary School Diploma with five academic Grade 12 courses numbered 611 or 621 including program specific prerequisites.	English 621A	Biology 621A	Chemistry 611A or 621A	Physics 621A	Math 611B	Math 621B (Math 621A may be used to satisfy a non-specific 4U Math prerequisite)	N/A
Quebec (CEGEP)*	One year of CEGEP completed with a minimum of 12 academic subjects including program specific prerequisites.	2 semester courses in English (603 or 604 series)	Biology NYA	Chemistry (NYA and NYB)	Physics (NYA and NYB)	Calculus 1 (Math NYC)	Linear Algebra (Math NYC) or Calculus 2 (Math NYB) (Linear Algebra must be presented if Advanced Functions is specifically stated)	N/A
Quebec (Private)	Secondary School Diploma with six academic Grade 12 courses including program specific prerequisites.	Grade 12 English	Grade 12 Biology	Grade 12 Chemistry	Grade 12 Physics	Grade 12 Calculus	Grade 12 Advanced Functions or Grade 12 Data Management	N/A
Saskatchewan	Secondary School Diploma with five academic Grade 12 courses at the 30 level including program specific prerequisites.	English 30A or 30B	Biology 30	Chemistry 30	Physics 30	Calculus 30	Foundations of Math 30 or Pre-Calculus 30 (Pre-Calculus 30 must be presented if Advanced Functions is specifically stated)	N/A

* Applicants from Quebec who have completed more than one year of CEGEP (more than 12 courses) will be considered for admission with transfer credit.

Applicants who have completed the DEC program at a CEGEP with a cumulative average of "B" or better will be considered for admission with transfer credit to a maximum of 30 credits. Prerequisite subjects will apply.

Admissions Chart

The following chart lists prerequisite courses required for Nipissing University degree programs in 2022. Please note that English refers to one of ENG4U or EAE4U.

Degree Program	OUAC Application Program Codes	Minimum Average	Majors	Required 4U or Equivalent
Bachelor of Arts (BA)	PA	70%	Anthropology, Child and Family Studies ^{7,8,9} , Classical Studies, English Studies, Environmental Geography ^{2,4} , Gender Equality and Social Justice, Geography ^{2,4} , History, Indigenous Studies, Philosophy, Political Science, Psychology ^{7,8,9} , Religions and Cultures, Social Welfare and Social Development, Sociology	English
			Economics	English; one Mathematics
			Computer Science ⁵ , Mathematics ⁵	English; Calculus and Vectors; one other Mathematics
	PAJ	70%	Criminal Justice – Corrections; Criminal Justice Studies; Criminology; or Policing streams	English
	PAL	60-69%	Liberal Arts – Foundations Pathway ¹²	English
	PAC	70%	Social Welfare and Social Development with a Social Service Worker diploma	English
	PAH	80%	History with an Orientation to a Master of Arts in History	English
Bachelor of Business Administration⁶ (BBA)	PBA	70%	Students select an area of concentration at the end of first year: Accounting; Entrepreneurship and Innovation Leadership; Finance; Human Resources; International Business; Marketing	English (two Mathematics is recommended) ¹
Bachelor of Fine Arts (BFA)	PFA	70%		English
Bachelor of Physical and Health Education (BPHE)	PPE	70%		English; one of Biology or Introduction to Kinesiology; (Chemistry and one Mathematics are recommended)

1 Students admitted without two 4U Mathematics or equivalent will be required to complete MATH 1911 and/or MATH 1912 in their first year.

2 A Certificate in Geomatics is also available to students pursuing an Honours degree in these majors.

3 A Certificate in Neuroscience is also available to students pursuing an Honours degree in these majors.

4 A Certificate in Environmental Management is also available to students pursuing an Honours degree in these majors.

5 A Certificate in Game Design and Development is available to students pursuing a degree in these majors.

6 An iLEAD Business Experience Certificate is available to students pursuing one of these degrees.

7 A Certificate in Applied Behaviour Analysis (ABA) – Lifespan is available to students pursuing an Honours Specialization, Specialization or a Major in these areas.

8 A Certificate in Early Intensive Behaviour Intervention (EIBI) – Autism Spectrum Disorder (ASD) is available to students pursuing an Honours Specialization, Specialization or a Major in these areas.

9 A Certificate in Program Evaluation and Applied Research (PEAR) is available to students pursuing an Honours Specialization, Specialization or a Major in these areas.

10 During Year 2 of the Bachelor of Social Work program, students must apply for admission consideration to the professional years (Years 3 & 4) of the program. Admission to the first or second year of the Bachelor of Social Work program does not guarantee acceptance into the professional years.

12 The Foundations Pathway supports the transition from high school to university for those students who have faced challenges in an academic environment. Further information can be found at nipissingu.ca/foundationspathway

Bachelor of Science (BSc)	PS	70%	Biology ³	English; Biology; Chemistry; one of Calculus and Vectors or Advanced Functions
			Computer Science ⁵	English; Calculus and Vectors; one other Mathematics; one of Biology, Chemistry or Physics
			Data Science	English; Calculus and Vectors; Advanced Functions; one of Biology, Chemistry or Physics
			Environmental Biology and Technology	English; Biology; Chemistry; one of Calculus and Vectors, Advanced Functions or Physics
			Environment and Physical Geography ^{2,4}	English; Mathematics; one of Chemistry or Physics
			Mathematics ⁵	English, Calculus and Vectors; Advanced Functions; one of Biology, Chemistry or Physics
	Psychology ^{3,7,8,9}	English; one Mathematics; one of Biology, Chemistry or Physics		
	PLB	60-69%	Liberal Science – Foundations Pathway ¹²	English; two of Chemistry, Mathematics (either Calculus and Vectors or Advanced Functions) or Physics
Bachelor of Science in Nursing (BScN)	PSN	70% 2021 cut-off: 78%-82%		English; Biology; Chemistry (one Mathematics is recommended)
Bachelor of Social Work (BSW)¹⁰	PSW	70%		English (minimum grade 70%)
Bachelor of Arts (BA) or Bachelor of Science (BSc) combined with Bachelor of Commerce (BComm)⁶	PAB or PSS	70%		The regular requirements for the Bachelor of Arts (BA) or Bachelor of Science (BSc) major to which the person has applied.

The following Certificates are available to all students pursuing any degree:

- Archaeological Monitoring
- Bilingualism
- Digital Classics
- Digital Humanities
- Forest Resource Management and Conservation
- Health Studies and Gerontology
- Peace and Violence Prevention Studies
- Study of State Violence (War, Atrocity, and Genocide)

For out-of-province admission requirements, see page 33.

For international admission requirements, visit nipissingu.ca/internationaladmissions

Admissions Chart – Concurrent Education Programs

Degree Program		OUAC Application Program Codes	Minimum Average	Majors	Required 4U or Equivalent
Concurrent Bachelor of Arts (BA)/ Bachelor of Education (BEEd)	Primary/Junior Junior/Intermediate Intermediate/Senior	PE PEA PEB	75%	Child and Family Studies ^{7,8,9} , Classical Studies, English Studies, Environmental Geography ^{2,4} , Gender Equality and Social Justice, Geography ^{2,4} , History, Indigenous Studies ¹¹ , Philosophy, Political Science, Psychology ^{7,8,9} , Religions and Cultures, Social Welfare and Social Development, Sociology	English (minimum grade of 70%); one 3U, 3M, or 4U Mathematics (minimum grade of 60%)
				Computer Science ⁵ , Mathematics ⁵	English (minimum grade of 70%); Calculus and Vectors; one other Mathematics (4U Mathematics courses are required for admission and a minimum grade of 60% must be achieved in one of 3U, 3M or 4U Mathematics)
	Primary/Junior Junior/Intermediate Intermediate/Senior	PED PEF PEG	75%	Criminal Justice – Corrections; Criminology; or Policing streams	English (minimum grade of 70%); one 3U, 3M, or 4U Mathematics (minimum grade of 60%)
Concurrent Bachelor of Business Administration (BBA)⁶ / Bachelor of Education (BEEd)	Primary/Junior Junior/Intermediate Intermediate/Senior	PEL PEM PEN	75%	Students select an area of concentration at the end of first year: Accounting; Entrepreneurship and Innovation Leadership; Finance; Human Resources; International Business; Marketing	English (minimum grade of 70%); one 3U, 3M, or 4U Mathematics (minimum grade of 60%); (two 4U Mathematics is recommended) ¹
Concurrent Bachelor of Fine Arts (BFA)/ Bachelor of Education (BEEd)	Primary/Junior Junior/Intermediate Intermediate/Senior	PEH PEI PEK	75%		English (minimum grade of 70%); one 3U, 3M, or 4U Mathematics (minimum grade of 60%)

- 1 Students admitted without two 4U Mathematics or equivalent will be required to complete MATH 1911 and/or MATH 1912 in their first year.
- 2 A Certificate in Geomatics is also available to students pursuing an Honours degree in these majors.
- 3 A Certificate in Neuroscience is also available to students pursuing an Honours degree in these majors.
- 4 A Certificate in Environmental Management is also available to students pursuing an Honours degree in these majors.
- 5 A Certificate in Game Design and Development is available to students pursuing a degree in these majors.
- 6 An iLEAD Business Experience Certificate is available to students pursuing one of these degrees.
- 7 A Certificate in Applied Behaviour Analysis (ABA) – Lifespan is available to students pursuing an Honours Specialization, Specialization or a Major in these areas.
- 8 A Certificate in Early Intensive Behaviour Intervention (EIBI) – Autism Spectrum Disorder (ASD) is available to students pursuing an Honours Specialization, Specialization or a Major in these areas.
- 9 A Certificate in Program Evaluation and Applied Research (PEAR) is available to students pursuing an Honours Specialization, Specialization or a Major in these areas.
- 10 During Year 2 of the Bachelor of Social Work program, students must apply for admission consideration to the professional years (Years 3 & 4) of the program. Admission to the first or second year of the Bachelor of Social Work program does not guarantee acceptance into the professional years.
- 11 Indigenous Studies is available to Concurrent Education students pursuing an Honours degree with a double major.

The following Certificates are available to all students pursuing any degree:

- Archaeological Monitoring
- Bilingualism
- Digital Classics
- Digital Humanities
- Forest Resource Management and Conservation
- Health Studies and Gerontology
- Peace and Violence Prevention Studies
- Study of State Violence (War, Atrocity, and Genocide)

Degree Program		OUAC Application Program Codes	Minimum Average	Majors	Required 4U or Equivalent
Concurrent Bachelor of Physical and Health Education (BPHE)/ Bachelor of Education (BEd)	Primary/Junior Junior/Intermediate Intermediate/Senior	PEO PEQ PER	75%		English (minimum grade of 70%); one of Biology or Introduction to Kinesiology; one 3U, 3M, or 4U Mathematics (minimum grade of 60%); (Chemistry and one 4U Mathematics are recommended)
Concurrent Bachelor of Science (BSc)/ Bachelor of Education (BEd)	Primary/Junior Junior/Intermediate Intermediate/Senior	PES PET PEU	75%	Biology ³	English (minimum grade of 70%); Biology; Chemistry; one of Calculus and Vectors or Advanced Functions (4U Mathematics courses are required for admission and a minimum grade of 60% must be achieved in one of 3U, 3M or 4U Mathematics)
				Computer Science ⁵	English (minimum grade of 70%); Calculus and Vectors; one other Mathematics; one of Biology, Chemistry or Physics (4U Mathematics courses are required for admission and a minimum grade of 60% must be achieved in one of 3U, 3M or 4U Mathematics)
				Data Science	English (minimum grade of 70%); Calculus and Vectors; Advanced Functions; one of Biology, Chemistry or Physics (4U Mathematics courses are required for admission and a minimum grade of 60% must be achieved in one of 3U, 3M or 4U Mathematics)
				Environment and Physical Geography ^{2,4}	English (minimum grade of 70%); Mathematics; one of Chemistry or Physics (a 4U Mathematics course is required for admission and a minimum grade of 60% must be achieved in one of 3U, 3M or 4U Mathematics)
				Environmental Biology and Technology	English (minimum grade of 70%); Biology; Chemistry; one of Calculus and Vectors, Advanced Functions or Physics (4U Mathematics courses are required for admission and a minimum grade of 60% must be achieved in one of 3U, 3M or 4U Mathematics)
				Mathematics ⁵	English (minimum grade of 70%); Calculus and Vectors; Advanced Functions; one of Biology, Chemistry or Physics (4U Mathematics courses are required for admission and a minimum grade of 60% must be achieved in one of 3U, 3M or 4U Mathematics)
				Psychology ^{3,7,8,9}	English (minimum grade of 70%); one Mathematics; one of Biology, Chemistry or Physics (a 4U Mathematics course is required for admission and a minimum grade of 60% must be achieved in one of 3U, 3M or 4U Mathematics)

For out-of-province admission requirements, see page 33.

For international admission requirements, visit nipissingu.ca/internationaladmissions

Come for a visit and see
 why you belong at Nipissing!



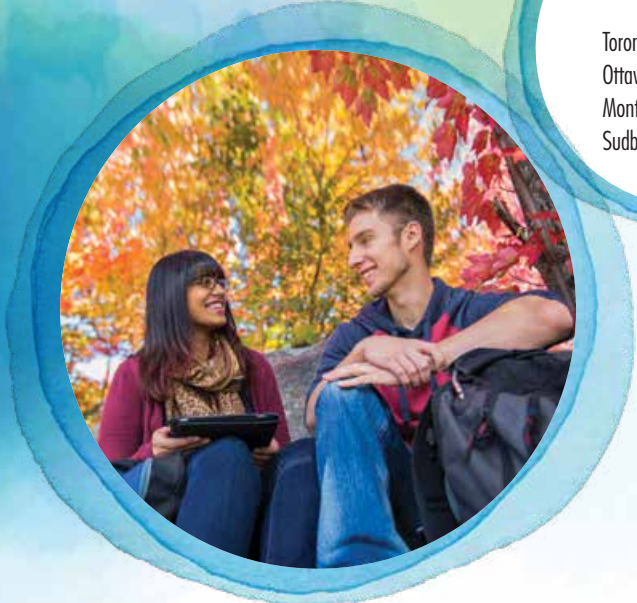
Open Houses

Fall: Saturday, November 6, 2021*
March Break: Saturday, March 19, 2022*

*Please check the website regularly for updates to events.
 For more information and to register for Open House, visit nipissingu.ca/visitus

Book Your Own Campus Tour

Can't make it to an open house? Please register for a campus tour offered throughout the week. Visit nipissingu.ca/visitus, call (705) 474-3450 ext. 4200 or email nuinfo@nipissingu.ca



Approximate Travel Times to North Bay:
 Toronto3.5 hours
 Ottawa4 hours
 Montreal5.5 hours
 Sudbury1.5 hours

Visit our campus map with virtual tours and photos:
map.nipissingu.ca

Connect with us

nipissingu.ca/futurestudents

@NURecruitment
 @NipissingU



ONE STUDENT AT A TIME

Student Recruitment Office • 100 College Drive, Box 5002, North Bay, ON P1B 8L7
 tel: (705) 474-3450 ext. 4200 • toll free (within Ontario): (800) 655-5154
 nuinfo@nipissingu.ca • fax: (705) 495-1772 • tty: (877) 688-5507

If you would like to request this publication in an alternative format please contact the External Relations Office at (705) 474-3450 ext. 4078